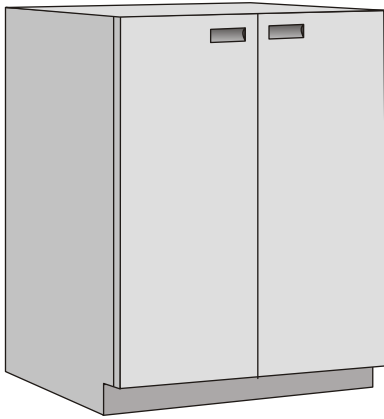


**Product ID: MKR 3005 LVC**

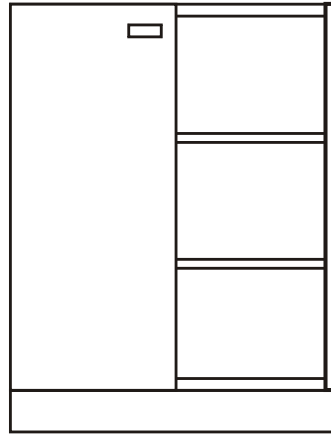


**Lower Vault Cabinet**

**SPECIFICATIONS:**

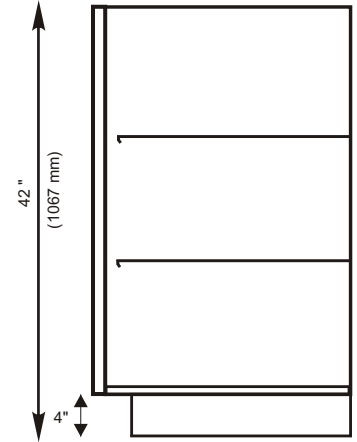
- comes standard with one camlock, dual custody is optional
- 2 adjustable shelves
- fixed base
- standard colour light gray, other colours available

32-5/8"  
(829 mm)



**FRONT VIEW**

25"  
(635 mm)



**SECTION**

**APPLICATION:**

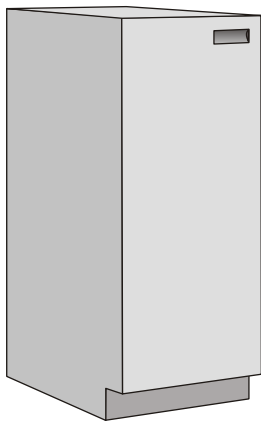
- used within vault
- light security storage of non-negotiables

**- Security Equipment -**



**- Financial Institutions -**

**Product ID: MKR 3005 HM**

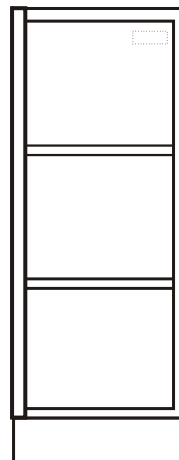


**Lower Vault Cabinet - Half Module**

**SPECIFICATIONS:**

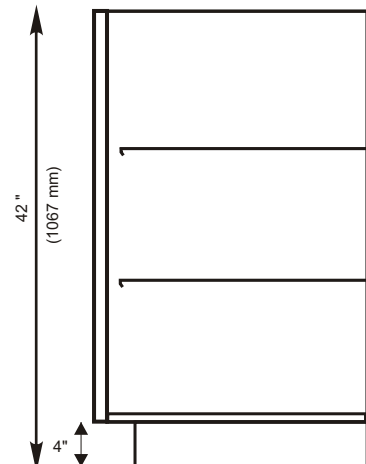
- comes standard with one camlock, dual custody is optional
- 2 fixed shelves
- fixed base
- standard colour light gray, other colours available

16-5/16"  
(414 mm)



**FRONT VIEW**

25"  
(635 mm)



**SECTION**

**APPLICATION:**

- used within vault
- light security storage of non-negotiables